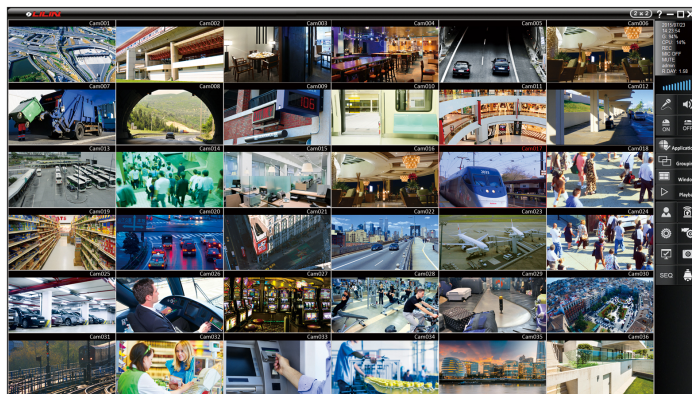




Navigator Software 2.0



Features

Navigator 2.0 Corporate

- Manage and record 108 IP cameras per station
- Integrated alarm management for various alarm outputs
- User-friendly UI and TV Wall application are supported
- 64bits program
- ONVIF Profiles S compliant
- System redundancy
- Advanced alarm scheduling & logic
- Hierarchical control center to manage multiple stations
- Central Alarm management with TV wall and eMap
- Support 4K UHD camera, 120FPS camera
- Support corridor mode and panoramic cameras
- Support web client.
- iPhone, iPad & Android support
- Perfect software for security checkpoints of corporate group to perform flawless remote monitoring

Navigator 2.0 Enterprise

- Manage and record 108 IP cameras
- Integrated alarm management for various alarm outputs
- User-friendly UI and TV Wall application are supported

-
- 64bits program
 - ONVIF Profiles S compliant
 - System redundancy
 - Advanced alarm scheduling & logic
 - Support 4K UHD camera, 120FPS camera
 - Support corridor mode and panoramic cameras
 - Support web client.
 - iPhone, iPad & Android support
 - Perfect software for security checkpoints to perform flawless remote monitoring

Navigator 2.0 Lite

- Manage and record 36 IP cameras
- Integrated alarm management for various alarm outputs
- User-friendly UI and TV Wall application are supported
- 64bits program
- System redundancy
- Advanced alarm scheduling & logic
- Support 5MP at 12 fps, and 2MP at 30 fps
- Support corridor mode and panoramic cameras.
- Support web client.
- iPhone, iPad & Android support
- Perfect software for security checkpoints to perform flawless remote monitoring

Description

Navigator 2.0 Corporate

LILIN VMS software – Navigator 2.0 Corporate records and manages up to 108 cameras of H.265/H.264/MJPEG HD IP cameras or DVR's / NVR's cameras. It can also support up to 108 channels IP cameras on multiple monitors for TV Wall application. Navigator 2.0 Corporate supports NAV Control Center which includes NVR P2P, centralized user management, centralized alarm management, centralized device management, eMap Center and Mosaic TVWall. To raise awareness on the situation of the environment, it is highly recommended to install Navigator 2.0 Corporate at security managers' office and security control command center.

Navigator 2.0 Enterprise

LILIN VMS software – Navigator 2.0 Enterprise records and manages up to 108 cameras of H.265/H.264/MJPEG HD IP cameras or DVR's/ NVR's cameras. It can also support up to 108 channels IP cameras on multiple monitors for TV Wall application. Electronic Point of Sale (ePOS) is tied in with Navigator Enterprise 2.0 in such a way that alarms can be raised on events such as cash drawers being left open. In addition, ANPR technology is integrated in Navigator Enterprise 2.0 software – it can read vehicle registration plates. Features like digital zoom, ePTZ, ROI, video archiving, and eMap live video are available in Navigator 2.0 software.

Navigator 2.0 Lite

LILIN VMS software – Navigator 2.0 Lite records and manages up to 36 cameras of H.265/H.264/MJPEG HD IP cameras or DVR's/ NVR's cameras. It can also support up to 36 channels IP cameras on two monitors for TV

Wall application with free of charge after registering your account at a registry site at meritlilin.com.
