

SR7022 Day & Night 60fps HD IP Camera

www.meritlilin.com



- ▶ Outdoor IP bullet camera
- ▶ 60 frames per second – ultra fast frame rate
- ▶ IP66 rain and dust resistant
- ▶ 1080p resolution
- ▶ Intelligent Video Surveillance analytics built-in

Dimensions:

82(W) x 72.5(H)x 154(D) mm; Bracket: 101(L) mm

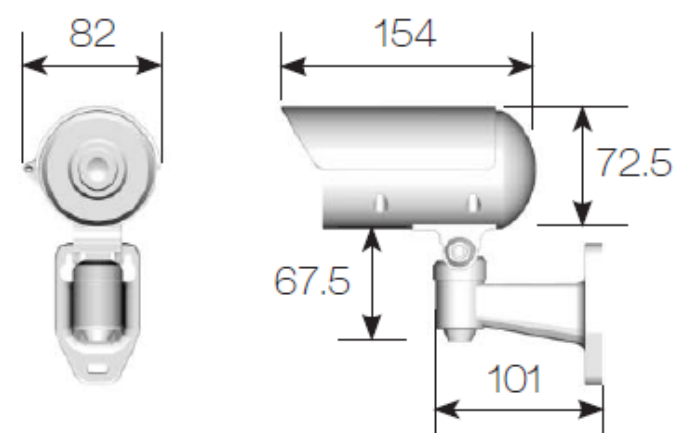
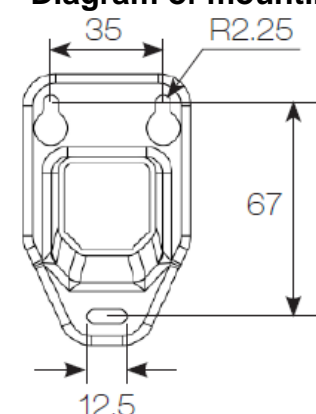


Diagram of mounting holes:



Viewing Objects to Ensure Pictures are Kept Sharp

LILIN S series camera – SR7022 is best-in-class IP camera has an ultra fast frame rate of 60 frames per second at 1080P Full HD resolution, this results in crystal clear images. Its IP66 rated housing protects the camera body against dust and rain, designed for a variety of outdoor applications. IP66 rating ensures operation under harsh weather conditions. SR7022 camera with 60 frame rate and IR infrared LED illuminator is able to capture fast moving objects during both daytime and nighttime

ONVIF-conformant

Open Network Video Interface Forum (ONVIF) is a standard for physical IP based security products. SR7022 camera is ONVIF Profile S conformant



SD Cards in Sync with NAV Software

SR7022 camera with built-in Micro SD/SDHC/SDXC card slots can provide redundant video viewing and recording. You can synchronize an SD card with LILIN VMS (Video Management Software) – Navigator (NAV)



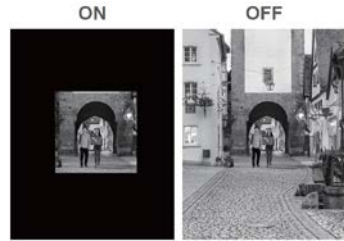
3D Noise Reduction

Remove noise from a signal. Suppressing noise in an image in low light conditions and able to retain quality videos at the same time



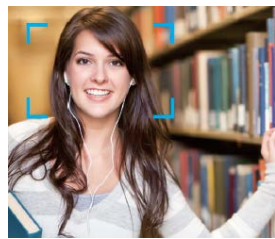
Region of Interest (ROI)

A Region of Interest (ROI) is a specified part of an image that is highlighted from a camera. This feature is great for highlighting areas such as doors or areas of access where an overall scene is still required



Face Detection

Automatically detects a human face



Advanced Motion Detection

Detect motion and capture the events. Motion in the selected area will provoke an alert. Time of motion in given direction can be detected by simply drawing an arrow on the video



Audio Detection

With Audio Detection technology, an alarm is triggered based on ambient sound conditions as the threshold



Motion Detection

Detect motion and capture the event. Motion in the selected area will provoke an alert



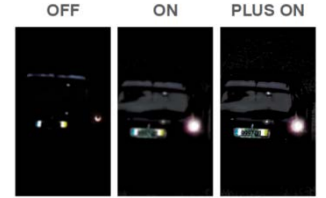
60 frames per second

60fps high frame rate ensure quick movements can be captured in more details, which is great for the most demanding surveillance requirements; i.e. railway system, freeway traffic, casino applications, and banking industry



Sense Up+

Deliver outstanding video outputs in poor light conditions without experiencing motion blur. You can see video clearly even during nighttime without sufficient lighting support



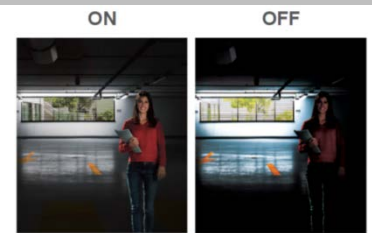
Video Security App

Available on Android and iOS – LILINViewer app provides security alarm push notification, real-time live viewing, and remote video playback



High Dynamic Range

An High Dynamic Range (HDR) image is made by taking 3 frames of the same scene and each at different shutter speeds to display details of both the darkest and brightest areas. HDR can extend image visibility under high contrast lighting scenes and improve image quality



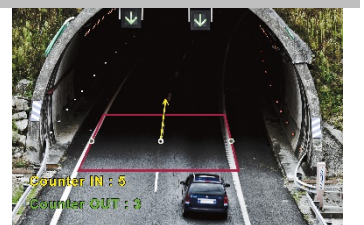
Tripwire Detection

Tripwire Detection can be used where physical security is impractical or even impossible; i.e. railway tracks. An alarm can be enabled in either directions across the tripwire. Line Crossing that an object crossing a line drawn anywhere in the scene can be detected, and also Zone Intrusion that any arbitrary shape zone can be set to monitor intrusion



Object Counting

Object Counting is able to accurately to input images containing similar objects. Intelligent Object Counting technology includes People Counting feature – people enter or exit an area over time can be counted, as well as Vehicle Counting feature – to detect and track vehicle in real-time



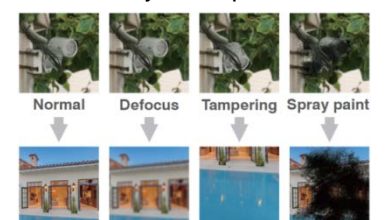
Privacy Masking

Privacy Masking is a feature used to protect personal privacy by concealing private areas in the camera's field of view. Doorways and house windows for example are not subject to surveillance



Tamper Detection

Automatically detects camera sabotage or failure. Detects any attempts to tamper with the camera – partially or completely blocking its lens or field of view



Day & Night 60fps HD IP Camera

Video performance

Model#	SR7022E4	SR7022E6
Low Light Mode	0.07 Lux at F1.6(Color);0.03 Lux at F1.6 (B/W)	0.07 Lux at F1.6 (Color);0.03 Lux at F1.6 (B/W)
With Infrared	0.0 lux	
2D WDR	Off / Auto / x2 / x3/ x4 (by normal mode)	
High Dynamic Range	Up to 120 dB by HDR mode, 2 shutter lines interleave	

Power

Power consumption	DC12V, 10W / PoE, 11W	
PoE	IEEE802.3af	
Power supply	DC12V ±10% Power over Ethernet (IEEE 802.3af compliant)	

Sensor

Sensor type	1/2.86-inch MOS	
Total sensor pixels	1952 x 1266	

Certifications

CE	Yes, EMI CLASS A	
FCC	Yes, EMI CLASS A	
IP Rating	IP66	

Lens

Model#	SR7022E4	SR7022E6
Focal length	4mm	6mm
Iris	F1.6	F1.6
Angle of View	H: 84° V: 42.5° D: 100.6°	57.6° 31.4° 67.3°

Night vision (infrared LED)

Distance	30m	
Peak wavelength	850nm, high efficiency array	
Beam spread	30.6°	

Environmental

Operating temperature	-40°C to 50°C (-40°F to 122°F)	
-----------------------	--------------------------------	--

PC requirement

OS	Windows 2000, Windows XP, Windows Vista, Windows 7, Windows 8	
CPU	Intel Core 2 Duo E6400 2.13GHz or above	
RAM	2GB or above, Independent Display Card	

Mechanical

Dimensions (W x H x D)	82 x 72.5 x 154mm	
Bracket (L)	101mm	
Weight	600g approx.	
Window	Ø65 Heat Resistant Glass	

Network security

Max number of online users	10 users account available	
Access	Multiple user access levels with password protection	
Encryption	Base 64 HTTP encryption	

Video streaming

Video compression	H.264 (main & high profile); M-JPEG	
Streaming	RTP / HTTP, RTP / TCP, RTP / UPP, Multicast Multiple configurable streams in H.264 and M-JPEG, configurable frame rate and bandwidth	
Bitrate	128Kbps to 12Mbps Frame rate and bitrate controllable on-the-fly VBR / CBR / GOP supported	
IP filter	Yes	
RTSP Authentication	On / Off	

Video resolution (H x V)

Resolution	2MP(1920 x 1080), 1.3MP(1280 x 960), 1MP(1280 x 720), D1(720 x 480, 720 x 576), VGA(640 x 480), CIF(352 x 240)	
Multiple profile	Profile #1	Dual-stream mode, H.264: up to 60 FPS @ 1920 x 1080, Motion JPEG: up to 30 FPS @ 720 x 480
	Profile #2	HDR mode, H.264: up to 30 FPS @ 1920 x 1080, Motion JPEG: up to 30 FPS @ 720 x 480

Video functions

Day/Night (IR-cut filter)	Colour (Day), Monochrome (Night), Auto, Schedule	
Scanning system	Progressive scan	
Adjustable picture setting	Contrast, Brightness, Saturation	
White balance	Auto / Tungsten / Indoor / Fluorescents1 / Fluorescents2 / Outdoor1 / Outdoor2	
Shutter	1/25(30)s to 1/30000s	
Back light compensation	On / Off	
3D noise reduction	Off / 1 to 32 selectable	
Privacy masking	Four independent areas	
Sense Up+	Yes	
Auto gain control	54 dB variable gain	
Other functions	Sharpness, Image flip, Image mirror, Defog, Hue	
D/N quality setting	Yes	

Integration

Mobile application	Integrated to LILIN mobile app (LILINViewer) iPhone, iPad, Android support	
Video management	ONVIF Profile S LILIN NAV 1.0 Third party VMS through LILIN HTTP API	
SD card recording	Support Micro SD/SDHC/SDXC card for circular recording (card is not included)	
Web browser	Microsoft® Internet Explorer® 6.0 and later	
Firmware	Firmware upgrade via HTTP	
Detection features	Motion detection, Tamper detection, Zone Entering, Direction detection, Zone crossing	
Alarm functions	Tampering / motion detection	
Alarm event	FTP, SMTP, HTTP post, SD card, SAMBA	
Alarm weighted mode	Yes	

Network

Ethernet	10/100/1000Mbps Base-T, RT-45	
Connectivity	ONVIF Profile S	
Users	8 simultaneous users	
Protocols	IPv4, IPv6, TCP, UDP, HTTP, SMTP, NTP, DDNS, UPnP, FTP, ARP, DHCP, PPPoE, DNS, RTSP, RTCP, Telnet, ICMP, IGMP, ONVIF Profile S, SNMP, SIP, Bonjour	
ePTZ & digital zoom	Yes, ROI (Region of Interest) is supported	
OSD	Text overlay for date, time and camera name	
CPU, Memory	Embedded SoC, 1.2GHz Dual ARM Cortex-A9 & 600MHz ARM11, 1GB DDR3, 256MB flash memory	
Video display	LILIN Universal ActiveX & LILIN Java Applet	
OS	Embedded Linux 3.8.0	
Multi IP address	Yes	
IVS Advanced 2.0	Motion Detection, Tampering Detection, Advanced Motion Detection, Traffic Light Detection, Tripwire Detection, Object Counting	
IVS Advanced 2.1 (Optional)	Unattended Object Detection, Missing Object Detection, Crowd Detection, Loitering Detection, Face Detection	